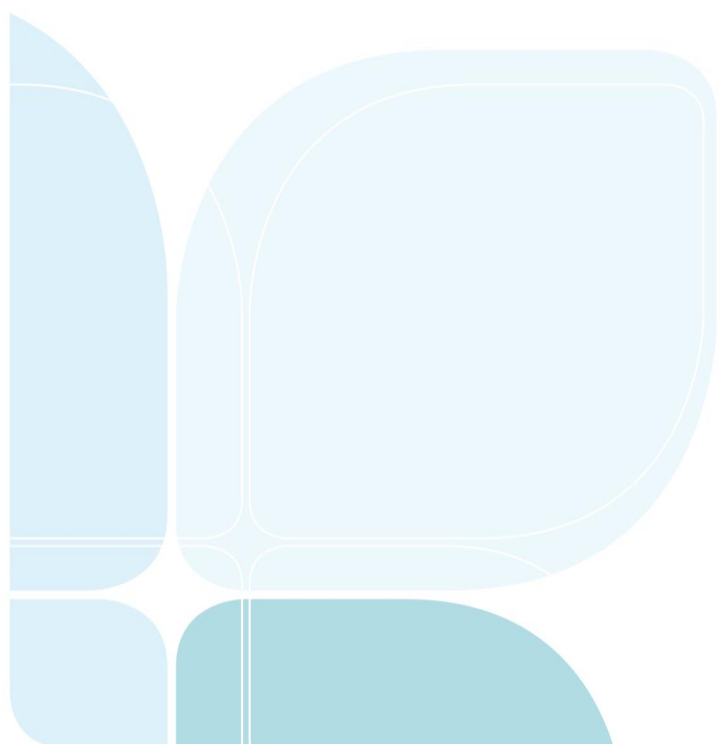




Local Land  
Services  
North West

# ANNUAL REPORT

1 January 2014 – 31 December 2014



Published by the Local Land Services

First published April 2015

ISBN 978-0-9943075-0-7

**Disclaimer**

The information contained in this publication is based on knowledge and understanding at the time of the report January 2014 to December 2014. However, users are reminded of the need to ensure that information upon which they rely is up to date and to check currency of the information with the appropriate officer of Local Land Services or the user's independent adviser.

© State of New South Wales through Local Land Services 2015.



## Chairman's Foreword

I am pleased to deliver the North West Local Land Services Annual report for 2014.

Throughout 2014, North West Local Land Services focused primarily on delivering outcomes that reflect regional priorities. One of the greatest assets of Local Land Services is that regional priorities are overseen by a local board and delivered by local staff. Everyone who plays a role in North West LLS is invested in the region—our region.

2014 was an very busy year; with major community engagement events hosted by North West LLS included Ag Quip in August and The North West Agricultural Productivity Summit, held at Narrabri in December.

The summit was an excellent forum featuring a collaboration of industry, government, researchers and producers. It saw the start of the conversation about increasing the capacity and profitability of agriculture in the North West.

North West Local Land Services' strategic partnership with Landcare provided a number of opportunities to showcase sustainability in its many guises across the region.

Invasive pests have been one of our major priorities during 2014 and we have been working closely with wild dog control groups in the south-eastern areas of our region with our 2014 autumn campaign delivering 13,209 baits over 56 holdings.

Walgett has been identified as a priority area for emerging wild dog populations and North West LLS has been working with landholders to increase awareness. As a direct result, landholders undertook two coordinated baiting programs in June and September.

Feral pigs were also a target with 39,130 kg of baited grain issued in 2014.

We were pleased to have been granted funding under the Commonwealth Drought on Farm Pest Program. A total of \$293,381 is to be allocated to Feral Pig and Wild Dog control programs which will be primarily delivered in the first half of 2015.

Looking ahead to 2015, we have another busy year in front of us. It will include the launch of our Regional Strategic Plan and our Travelling Stock Reserve Plan of Management.

**Conrad Bolton – Chairman, North West Local Land Services.**

## About Local Land Services

Local Land Services (LLS) brings together agricultural production advice, biosecurity, natural resource management and emergency management into a single organisation. Eleven LLS regions, managed by 11 local boards cover NSW: Central Tablelands, Central West, Greater Sydney, Hunter, Murray, North Coast, Northern Tablelands, North West, Riverina, South East and Western regions.

Each Region is accountable for delivering services that add value to local industries, enhance natural resources, protect industries from pests and disease and help communities respond to emergencies like flood, fire and drought.

Local boards headed by local chairs work closely with farmers, landholders and communities. Each region will develop operational management plans that will prioritise service delivery on a regional basis, reflecting regional priorities.

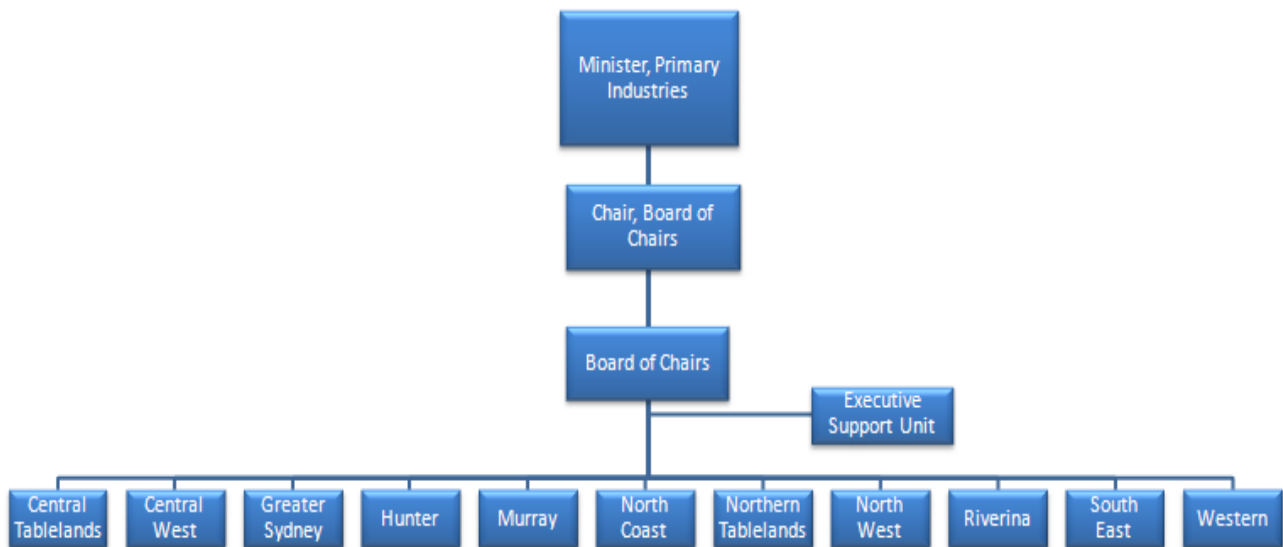
All the local Chairs together form the Local Land Services Board of Chairs. The Local Land Services Board of Chairs is led by the Local Land Services Chair of the Board of Chairs, John Macarthur-Stanham.

Local Land Services boards are accountable for:

- administering and delivering local land services
- developing and implementing appropriate governance arrangements for the delivery of local land services
- preparing a state strategic plan and local strategic plans
- providing and facilitating education and training in connection with agricultural production, biosecurity, natural resource management and emergency management
- making recommendations regarding rates, levies and contributions on rateable and other land
- providing and administering grants, loans, subsidies or other financial assistance for local land services
- communicating, consulting and engaging with the community, including the Aboriginal community, to encourage participation in the delivery of local land services.

The Regions and the Board of Chairs are supported by a small Executive Support Unit (ESU) located primarily at Dubbo. The Executive Support Unit seeks to provide Local Land Services with operational leverage and administrative and policy consistency, while respecting Regional decision making and accountability.

# Organisational Chart



## The North West Local Land Services Region

The North West Local Land Services region is located in the North West of NSW stretching from Quirindi in the south, the Queensland border in the north, Bendemeer in the East and Walgett in the west

It is bounded by the Great Dividing Range in the east, the Liverpool Ranges and the Warrumbungle Ranges in the south and the Nandewar Ranges in the north. Major tributaries are the Namoi, Peel, Cockburn, Manilla and McDonald rivers in the Namoi Catchment and the Macintyre, Gwydir, Severn and Barwon rivers in the Gwydir Catchment.

The North West Local Land Services region is made up of the council areas of Gunnedah, Gwydir, Liverpool Plains, Moree Plains, Narrabri, Tamworth and Walgett. The region has an area of approximately 82,000 km<sup>2</sup>, a distance of over 440 kilometres.

It is home to around 113,000 people who live mainly along the rivers and their tributaries with major regional centres of Moree, Narrabri, Gunnedah and Tamworth. Around 7,500 people are employed directly in agricultural industries.



## Principal Office

Principal Office Address	Principal Office Phone	Email & Website
101 Barwon St Narrabri 2390	(02) 67922533	<a href="http://www.northwest.lls.nsw.gov.au">www.northwest.lls.nsw.gov.au</a> <a href="mailto:admin.northwest@lls.nsw.gov.au">admin.northwest@lls.nsw.gov.au</a>

## Senior Staff

	General Manager	Manager Land Services	Manager of Strategic Land Services	Business & Finance Manager	Manager of Biosecurity and Emergency Services
Name	Ken Flower	Matt Davidson	James Hutchinson-Smith	Samantha Moss	Shaun Slattery
Location	Narrabri	Tamworth	Tamworth	Tamworth	Narrabri
Contact	Ph:0267922533	67645915	67645970	67645988	67921639

## Governance

CHAIRMAN	BOARD MEMBER	BOARD MEMBER	BOARD MEMBER	BOARD MEMBER	BOARD MEMBER	BOARD MEMBER
Conrad Bolton	Tony Haggarty	Richard Clark	Elizabeth Guest	Phil Kirkby	Penny Blatchford	Mark Evans

## Board Attendees

North West LLS	Name of Board Member	Number of Possible Meetings	Number of Meetings Attended
	Conrad Bolton	10	10
	Tony Haggarty	10	9
	Richard Clark	10	8
	Elizabeth Guest	10	9
	Phil Kirkby	10	6
	Penny Blatchford	10	8
	Mark Evans	10	8



## Operational Overview

The first year of operation of any business or organisation is inevitably going to present challenges, establishing new policies, systems and offices, integrating organisational cultures, recruiting specialty staff -all these things take time, flexibility and patience on many levels.

One thing however that has been a constant during this period of change is the dedication and support of our staff, coupled with the advice and guidance of the North West Local Land Service Board, all of whom are committed to working together for the best outcomes - for our region.

The support of both staff and the Board were major contributing factor our achievements in 2014..

I am very pleased that by October 2014 North West LLS has eight regional offices located at Goondiwindi, Moree Warialda ,Walgett Gunnedah,Tamworth and Narrabri with all staff having being co-located with the exception of Tamworth where planning for the Taminda site is well underway. One Tamworth office is now a major goal for 2015

The co-location of offices is not only a cost benefit but allows for the ease of cross team collaboration which ultimately results in better customer outcomes.

Community, aboriginal, local government and Industry advisory groups have been established and continue with their valuable contributions to our organization, and I thank the members for their significant contributions.

Foundations have been put in place for strategic alliances with industry organisations with the view to both inform and consult resulting in collaboration for the greater benefit of the North West.

Staffing has been a key element of 2014. Attracting and retaining specialist staff is often a challenge in regional and rural areas, North West LLS has been fortunate in engaging three new veterinarians, 2 agronomists and a livestock officer who joined our ranks.

North West LLS now has District Vets located at Tamworth, Gunnedah, Narrabri, Moree and Warialda, providing a surveillance network that not only meets the required state standards for market assurance and emergency animal disease detection, but allows more landholders to now have access a local District Veterinarian.

Our multi-disciplinary natural resource management team continued to deliver valuable outcomes across the North West. Agricultural extension services were boosted by two full time agronomists and a senior livestock officer all with diverse specialist skills, who work with landholders to enhance agricultural profitability across the region.

Like the rest of the North West the effects of drought has reduced feed significantly on Travelling Stock Reserves this resulted in no walking permits being issued in November 2014. The decision was taken to close some of our western TSRs at the end of December.

Over the next year I look forward to building on the foundation work that has been put in place in the first twelve months as North West Local Land services continues to deliver outcomes across region.

**Ken Flower - General Manager North West Local Land Services**



# North West Local Land Services Community Advisory Groups

## Local Community Advisory Group

Local Community Advisory Groups provide input into the development of plans, projects and services and are an integral link between Local Land Services and the community it serves.

All Local Land Services regions have set up, or are in the process of setting up, community advisory groups.

The North West Local Land Services Community Advisory Group (CAG) commenced activity in late 2014 with four members representing Warialda, Gunnedah, Moree and Tamworth with another three members being actively sought. The North West LLS CAG follows a hub and spoke model meeting four times a year.

Each of the Community Advisory Group members established sub committees located across the region who meet regularly.

Regional community orientated seminars and activities have been identified as future engagement activities for feedback opportunities for the CAG and their sub committees.

## Aboriginal Advisory Group

The purpose of the Aboriginal advisory group is to engage regional Aboriginal communities as key collaborators and provide a forum for discussion and feedback on common issues and activities.

Members selected to represent 14 sub-regions of the region. The Aboriginal advisory group meets three times a year.

## Local Government Advisory Group

The purpose of the Local Government Advisory group is to engage local government as a key collaborator and provide a forum for discussion and feedback on common issues/activity. This group has a representative from each of the seven Local Government Areas of the region.



*North West LLS staff & community advisory group members*



## Key Achievements

Protect And Conserve Land, Biodiversity And Native Vegetation	
Measure	Achieved
Number of conservation covenants or other agreements attached to title negotiated	5 PVPs with offsets on title
Area (ha) protected	273.9 ha of PVP offsets
Number of voluntary conservation agreements negotiated	36
Area (ha) protected	
Area (ha) of terrestrial native vegetation enhanced/rehabilitated	9,587ha
Area (ha) of terrestrial native vegetation protected by fencing	
Area (ha) planted to terrestrial native species	298ha

Community Involvement and Support	
Measure	Achieved
Number of awareness raising events such as demonstrations, field days or study tours conducted	26
Number of participants who attended in days	952
Number of written products such as brochures, newsletters, posters or fact sheets developed	12
Estimated number of recipients	8100
Number of training sessions, workshops, seminars or other skills and training events conducted	5
Number of participants in person in days	383
Number of community groups OR projects assisted	5
Number of activities undertaken to support community groups	8

Protect Rivers, Wetlands And Coastal Environments	
Measure	Achieved
Streambank length (km) of riparian vegetation protected	46km

## Animal Biosecurity & Welfare

### Successful management of emergency animal diseases (EADs)

During 2014 all Local Land Services regions successfully worked with Department of Primary Industries to minimise the impacts of EADs on trade, production, the environment and public health and wellbeing. This was achieved through:

- Emergency animal disease Investigations
- Preparing for and responding to EAD Incidents
- Inspecting piggeries for swill feeding
- Submitting brains from suitable cases to exclude Transmissible Spongiform Encephalopathy (BSE and scrapie)

Measure	Achieved
Number of investigations to exclude an EAD	4
Number of training exercises conducted by region	0
Number of staff that participated in a EAD response during 2014	0
Percentage of (at risk) pig properties inspected for swill feeding in last 4 years	10% 2
Number of sudden death investigations to exclude anthrax	part of 380
Number of Anthrax incidents managed	1
Number of Hendra incidents managed	0
Number of cattle and sheep brains collected and submitted to exclude TSE	15

### Improving market access for NSW livestock and products, supported by adequate and relevant surveillance information

During 2014 all Local Land Services regions successfully worked with Department of Primary Industries to ensure market access for NSW was supported by adequate and relevant surveillance information. This was achieved through:

- A network of District Veterinarians and Biosecurity Officers undertaking disease investigations to maximise likelihood of early detection of notifiable exotic and endemic diseases
- Managing Property Identification Codes for all holdings with stock
- Certifying holdings to enable live exports
- Entering surveillance events in the electronic Livestock Health Management System
- Submitting articles (case reports) to the DPI-LLS Animal Health Surveillance News
- Sampling sentinel herds and managing light traps as part of the National Arbovirus Monitoring Program (NAMP)
- Regional surveillance projects
- Sale yard inspections

Measure	
Number of District Veterinarians (as at 31 Dec 2014)	2.5
Number of specialist Animal Biosecurity Officers (as at 31 Dec 2014)	1
Number of disease investigations: visits	205
Number of disease investigations: telephone	175
Total number of PICs	9996
Total number of PICs that required active management during 2014 (new, amalgamated, subdivided)	50
Number of articles submitted to DPI-LLS Animal Health Surveillance News	6
Number of NAMP sentinel herds	7
Number of NAMP light traps	2
Number of regional surveillance projects	1
Number of sale yard inspections	12
<p>Animal welfare standards are effectively managed to allow market access and meet community expectations</p> <p>During 2014 all Local Land Services regions successfully worked with DPI to ensure the welfare of stock grazing on rated land meets community and industry expectations and allows market access for NSW products. This was achieved through:</p> <ul style="list-style-type: none"> <li>• District Veterinarians and Livestock Officers, at the requests of the RSPCA, providing advice to stock managers and enforcement agencies in “failure to feed” cases under the Prevention of Cruelty to Animals Act.</li> <li>• Animal welfare is effectively managed in incidents and emergencies (including flood and fire).</li> </ul>	
Measure	Achieved
Number of ‘failure to feed’ cases attended	0
Number of incidents and emergencies requiring animal welfare management	0
<p>The negatives impacts of established diseases and pest of animal are minimised in NSW</p> <p>During 2014 all Local Land Services regions successfully worked with DPI to assist industry to manage the priority diseases that exist in NSW.. This was achieved through the delivery of the following endemic disease programs:</p> <ul style="list-style-type: none"> <li>• Maintaining all of NSW a Footrot Protected Area - NSW Footrot control program</li> <li>• Maintaining the NSW Beef herd’s Bovine Johne’s disease (BJD) Protected Area Status - National BJD program</li> <li>• Supporting producer groups to form regional biosecurity groups to manage and prevent the spread of OJD into areas with low rates -I Ovine Johne’s disease (OJD) management program</li> <li>• Cattle Tick and Tick Fever</li> <li>• NSW Sheep Lice Program</li> <li>• <i>Cysticercus bovis</i></li> <li>• Other notifiable disease investigations and management</li> </ul>	
Measure	Achieved

Total number of lameness investigations to exclude sheep footrot	part of 380
Number of footrot infected flocks under management to eradicate footrot during 2014	0
Number disease investigations to exclude BJD	part of 380
Number of BJD traces investigated	2
Number of BJD infected herds under property disease management plans	0
Number of OJD Regional Biosecurity Areas	1
Number of producers provided with advice on sheep lice control	part 175
Number of <i>Cysticercus bovis</i> field investigations	0
<p>NSW manages residue or contaminant risks in livestock production and significant zoonotic risks from animal diseases</p> <p>During 2014 all Local Land Services regions successfully worked with DPI to ensure:</p> <ul style="list-style-type: none"> <li>• trade is not disrupted by residues or contaminants in livestock or livestock products</li> <li>• human health is not at risk from contaminants and</li> <li>• people are safeguarded from significant animal diseases that also affect humans (i.e.zoonoses)</li> </ul> <p>This was ensured by:</p> <ul style="list-style-type: none"> <li>• Prompt investigation of all residue cases originating the from National Residue Survey</li> <li>• Property management plans (PMPs) for all properties with residue contamination with grazing animals.</li> <li>• Delivery of the National Organochlorine Management Program</li> <li>• Management of lead and other toxicity cases with residue implications</li> <li>• Liaison with NSW Public Health Units to ensure knowledge of any zoonotic incidents are shared between the organisations</li> <li>• Investigation of any relevant wildlife or feral animal diseases</li> </ul>	
Measure	Achieved
Number of Organochlorine Management and other trace back residue investigations	20
Number of holdings with current OC and other residues Property Management Plans	48
Number of lead and other toxicity cases managed	6
Number of disease events referred to Public Health Unit	0)

<b>Invasive Species</b>	
Local Land Services has responsibility to lead the coordination of strategic control programs in regions where invasive species threaten Biosecurity. The key focus of the work is aimed at reducing the impact of endemic species (i.e. declared) and prioritising the exclusion or eradication of emerging and new species. LLS achieves this work through collaboration and where necessary compliance and enforcement services with landholders and local, state and commonwealth stakeholders who all share responsibility and the benefits for managing invasive species.	
Measure	Achieved
Measure (Wild Dogs)	Achieved
Baits laid Aerial campaign	13209
Number of wild dog management plans	3
Wild dog associations working with NWLLS	3
Number of integrated aerial baiting programs for wild dogs	1
Baits laid by NWLLS land holder implemented campaigns	40,532
Fox baits laid group and individual land holders	36,776
Measure (Rabbits)	Achieved
Pindone treated carrots distributed	641kg
1080 treated carrots distributed	487.8kg
Measure (Feral Pigs)	Achieved
Grain distributed group and Individual baiting programs	39130kg
Measure (Other LLS Activities)	Achieved
LLS full time equivalent positions committed to managing invasive species	5.5
Capacity – ensure NSW has the ability and commitment to manage invasive species	
Measure	Achieved
Number of training and workshop days aimed at building the capacity of land managers to undertake effective invasive species management	9
Number of land managers participating with training programs and development workshops	65

## Emergency Response

Local Land Services has a responsibility to provide emergency management roles in prevention, preparedness, response and recovery for biosecurity emergencies and natural disasters. LLS is a supporting government agency under the Agriculture and Animal Services Function Area (AASFA), so it must ensure that resources of LLS are available during a natural disaster or biosecurity emergency. The AASFA allocates the responsibilities for emergency management and the measures below reflect those responsibilities.

**Prevention – Building capacity in the community to minimise the impacts of emergencies on agriculture and animals**

Measure	Achieved
Number of regional industry <u>groups</u> that LLS has been involved with that assists with prevention and/or building capacity to minimise the impacts of emergencies on agriculture and animals.	1

**Preparation – Building capacity in LLS and the community to prepare for and reduce the impact of emergencies affecting agriculture and animals.**

Measure	Achieved
% of staff identified in the regional Emergency Response Team that are trained to the applied level.	52
Number of LLS staff that have been trained to the introduction level	13
Number of LLS staff that have been trained to the applied level	13
Number of LLS staff that have been trained beyond the applied level	13

**Response – Ensuring an effective, coordinated response to emergencies impacting on agriculture and animals**

Measure	Achieved
Number of estimated working days devoted to emergency responses	0
List of emergency responses participated in	0

**Recovery - helping communities recover from the impacts of an emergency affecting agriculture and animals**

Measure	Achieved
Number of natural disaster response reports that have been prepared and submitted to the Regional Director	0
Number (and location) of natural disaster declarations that have been made as a result of LLS preparing natural disaster reports.	0

<b>Plant Biosecurity</b>	
Prevention – There will be no introductions into the region of any plant biosecurity issues	
Measure	Achieved
Education and training of LLS personnel on biosecurity awareness, best practice, preparedness and prevention	One DPI Plant Biosecurity workshop held per LLS Region
Identification of local plant biosecurity threats and incursion pathways with local industry	Plant Biosecurity issues identified and documented in each region in a factsheet
LLS field personnel trained for surveillance activities	Introductory training for biosecurity staff in each region. Identification of plant biosecurity role within Biosecurity and Emergency Services Unit
Early detection – Any plant biosecurity incursions into the region are immediately identified and reported	
Measure	Achieved
Receive training in emergency management and response procedures	Incident Management Team identified in each region and trained in emergency management and response procedures.
Field personnel trained for Emergency Plant pest surveillance activities	Field personnel have been trained by DPI Plant Biosecurity in LLS regions where surveillance programs have been carried out
Containment and eradication – All plant biosecurity incursions are contained and eradicated	
Measure	Achieved
Delivery of education and training to other LLS staff and local groups on biosecurity awareness, best practice, preparedness and prevention.	Information provided at field days, staff forums in each LLS Region.
Field personnel trained for Emergency Plant pest surveillance activities	Field personnel have been trained by DPI Plant Biosecurity in LLS regions where surveillance programs have been carried out
Transition to management	
Measure	Achieved
Action transition to management projects including recovery	Nil requirement due to no plant biosecurity incursions across the state for the reporting period.
Effective management of established pests and diseases	



Measure	Achieved
Promotion of practices to prevent spread	Plant Biosecurity information provided at local field days and events to producer groups and industry.